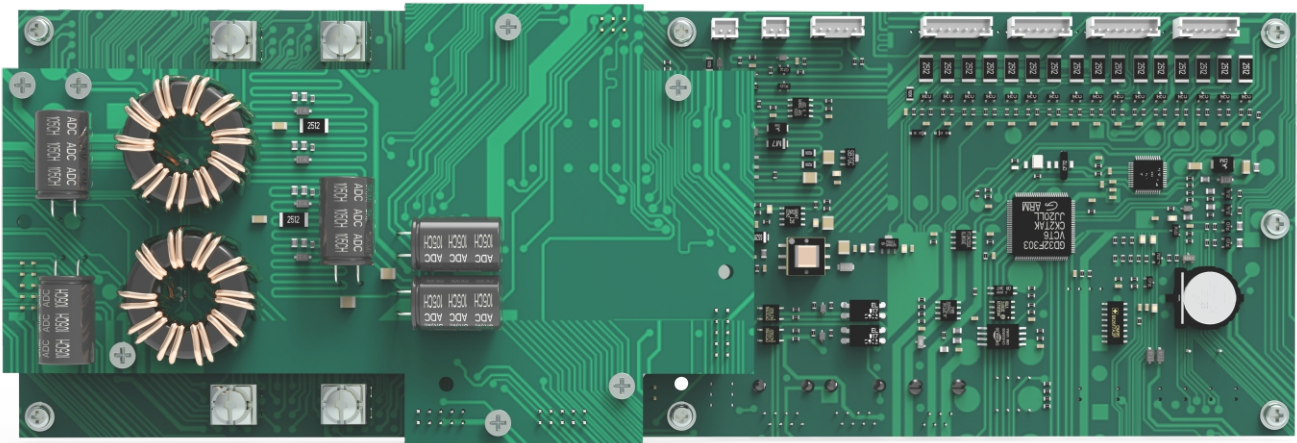
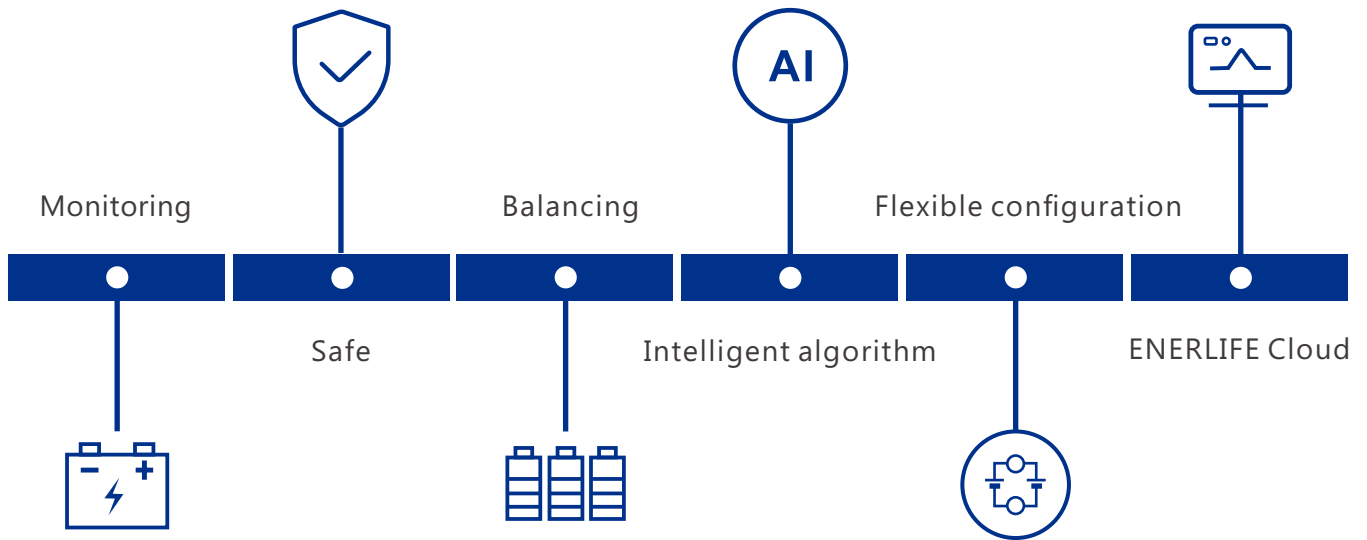


# Ener-BMS 48V/100A

## Features



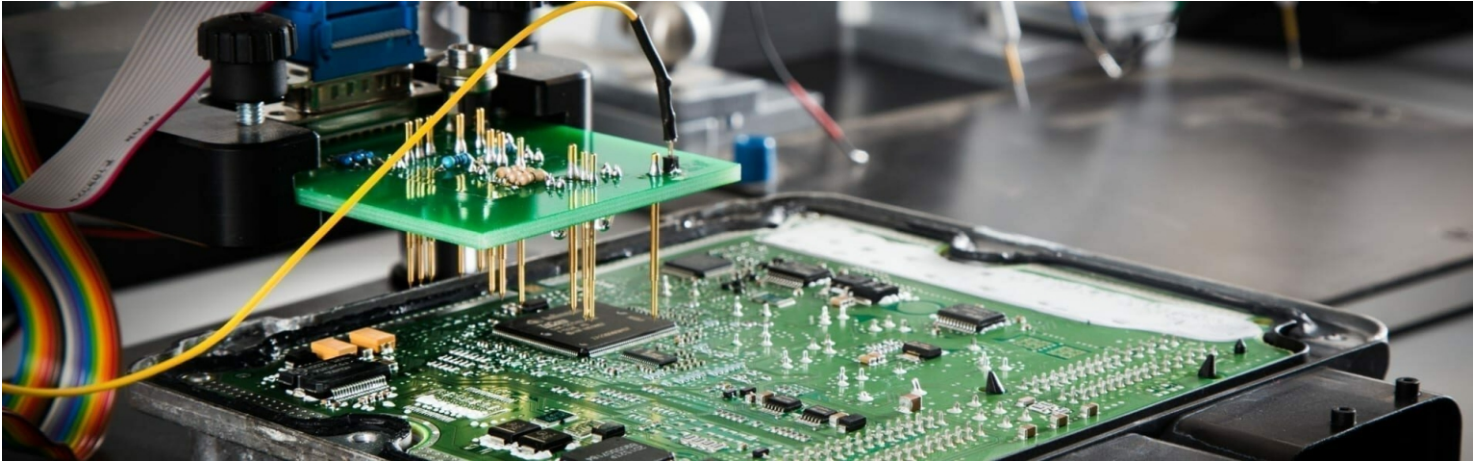
**HoT** | **ENERLIFE**

Shenzhen H&T Enerlife Technology Co., Ltd.

Add.: H&T Industrial Park, No.18 Baoshan Road, Tianliao Community, Guangming District, Shenzhen, China 518132

Tel.: +86 755 8611 1086 Email: enerlife@szhittech.com Web: www.c-enerlife.com

## Energize Your Life



Item	Parameter
Product Model	16S48100P-20A-SV10
Configuration	Max. 16 in series
Battery Type	LiFePO <sub>4</sub>
Communication	RS485, CAN, WIFI (optional)
Max.Constant Discharge Current	100A
Recommended Charge Current	100A
Recommended Charge Current	50A
Recommended Discharge Current	50A
Cell Balancing Current	≤50mA
Operating Voltage Range	22~70V
Operating Temperature	-20~85°C/-4~185°F
Storage Temperature	-40~85°C/-40~185°F
Humidity	10~85%RH
Dimension(L*W*H)	300*100*46.4mm
Current Consumption	Active mode: ≤30mA
	Undervoltage-lockout: ≤100μA